



# CleverView<sup>®</sup> for IP Service Performance v2.2

Monitoring Cloud Service Performance

## Key Features

- Real-time remote service monitoring for **virtual IP devices and cloud computing**
- **Web-Based Service Level and Real Time Reporting** allows global viewing by authorized users
- Support **critical IP service monitoring** (DNS, routers, FTP, Telnet ...)
- Verify **Email Server** functionality and responsiveness
- Monitor any TCP/IP **application port** connections through **Portmon**
- **Single entry point** to access availability, performance, and service levels for critical IP services through **ServicePoint**
- **Customizable alert** notification when performance thresholds are exceeded
- **Quick Diagnostic tests** accesses the real time performance of defined system devices
- **Determine IPv6 Readiness** at both the network and transport layers

## The CLEVER<sup>®</sup> Cloud Business Service Management

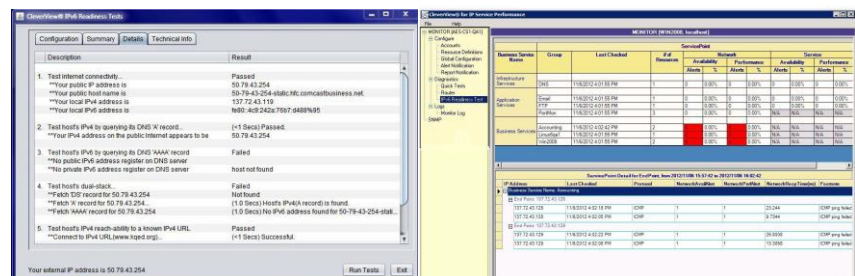
In today's economy, maintaining adequate service levels while reducing total cost of ownership (TCO) is a necessity. While Cloud computing, Big Data, and Mobile strategies implementations stretch IT organizations now, IPv6 rollouts represent a significant change in the core infrastructure of your businesses and cannot impact existing business service levels. Understanding your readiness for IPv6 will be critical. CleverView for IP Service Performance helps you maximize service levels for your major business functions in these environments, including:

- **Infrastructure Services** — DNS Servers and Routers
- **Application Services** — high-demand core business Applications
- **Business Services** — critical business groups

### CleverView for IP Services provides:

- **Service Levels Auditing** —
  - **Monitoring server cloud performance** – proactive auditing capabilities assure the availability of such remote services as routers, DNS, and FTP, to name a few.
- **Enhanced Business Service Performance** —
  - **Comprehensive real-time performance and availability monitoring** assures functionality of critical IP Services, as well as the ability to monitor the accessibility of application ports.
  - **Focused business service monitoring** can be performed by specific business groupings.
  - **Web-based Management Service Level Reports** facilitate real-time and historical trending.
- **Greater Cost Efficiency** —
  - **Valuable support for both IPv4 and IPv6** protects your mission critical services as your core infrastructure evolves.

**AES**  
 P.O. Box 50927  
 Palo Alto, CA 94303  
 (650) 617-2400  
[www.aesclever.com](http://www.aesclever.com)



# AES - The Business Service Management Company

## Highlights of CleverView® for IP Service Performance

- View **centralized availability and performance data** for IP-addressable resources through ServicePoint. Summary information provides a general overview and the ability to zoom-in for more detailed information provides a concise view of the IP environment.
- Access **superior monitoring for both IP-Addressable Devices** (such as Cisco Routers and end points) **and IP-Based Services** (such as DNS servers, FTP, Telnet, and application Ports). Sophisticated IP-Based Services monitoring does more than ping the desired service. It **performs the actual task, continuously and automatically** from the selected service. For example, it will tell you not only whether the DNS Server is up and running, but whether the service was able to perform an actual DNS Lookup and properly resolve the name and address.
- Utilizes **single-click Quick Tests** to determine the root cause of exceptions and to provide real-time snapshots of current conditions.
- **Service Level Reports** provide historical information about the network and its ability to meet the established service level requirements. Filtering options allow users to
  - create **near-time** reports of where the service has failed for troubleshooting, and
  - generate **historical** reports showing alerts and averages for trending (for DNS, EndPoint, FTP, PORTMON, Router, Email, and TELNET).

### CleverView for IP Service Performance Version 2.2 introduces:

**IPv6 Readiness Testing** – Test IPv6 hosts belonging in a network and determine reach-ability and performance at the network and transport layers. Information includes details on the host IP configuration, which stack (IPv4 or IPv6) is used to reach a site that offers both IPv4 and IPv6 connections, performance details like response times from DNS including ISP's, and tests to reach a series of URLs with the corresponding successes and failures provides insight into how ready you are for IPv6.

### System Requirements:

**Hardware Requirements:** Pentium 4 or equivalent, CPU running at least at 1.8 GHz, 1 GB of RAM, 80 GB of disk space

### Software Requirements:

Operating Systems	Windows 10, Windows Server 2016
Supported Browsers	Internet Explorer 8.0 and above; Firefox 15 and above
Other Software	MySQL 5.1; Microsoft Report Viewer 2005
For Windows XP and Windows Server 2003	IIS version 5.0, 6.0, 7.0 ; ASP .NET v2.0.50727; NET Framework 3.5
For Windows 7 and later	IIS 7; .Net Framework 3.5 SP1; .Net Framework 4.0; AES .NET 4.0



AES  
P.O. Box 50927, Palo Alto, CA 94303 USA  
Phone: (650) 617-2400 Fax: (650) 617-2420  
Website: www.aesclever.com Email: info@aesclever.com



MM-4-1302-DS